



9 x 27 Floating Cabin (approx 238/sqft)

9' x 27' Cabin on 1969 Drift-R-Cruz 12' x 39' Fiberglass Hull AND
12' x 31' Dock w/10' 8" x 20' Canopy, AND 12' x 24' 9" Dock w/3' x 4' Storage Shed & Storage Locker,
Convertible Bench, Convertible Dinette, Full Size Futon, & Full Size Bed (Sleeps 5 – 7),
1 Bath w/Marine Head, Vanity Sink, & Walk-In Shower, plus Outside Shower w/1HP Lake Water Pump,
Electric Refrigerator/Freezer, Microwave, 4-Burner Gas Oven/Range, Stainless Sink, Toaster & Coffee Maker,
Char-Griller Flat Iron Gas Griddle & 217 Grilling Company Pellet Grill/Smoker,
Patio Table/Chairs, (2)Lounge Chairs, 4-Step Swim Boarding Ladder, Water Basketball Goal,
(2)Window Air Conditioning Units (Approx 5,000/BTUs Each), Honeywell Electric Baseboard Heater,
32" Samsung LED HDTV, 32" Sony LCD HDTV, 24" Vizio 720p HDTV, Bluray/DVD Player,
1 HP Lake Water Pump, Two-Stage Filter, & Ultra-Violet Water Sterilizer Light Treatment System,
10 Gallon Electric Water Heater, 50 Gallon Waste Holding Tank,
Both Docks Constructed on Styrofoam Floats & Lumber Decking (Flotation Must be Replaced by 2031),
Covered Front Porch, 6' 4" Cabin Headroom, TVA Registered!
Norris Lake Mooring Location w/Shore Power Transferable!

\$ 19,900

Call Travis for more info or to arrange a showing

(865) 293-8258

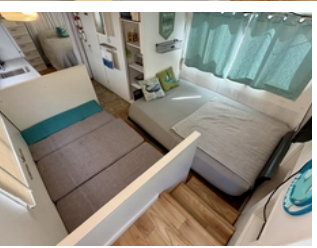


9 x 27 Floating Cabin (approx 238/sqft)

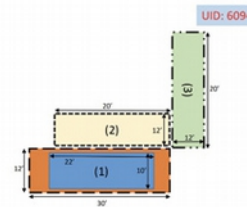
\$ 19,900

Call Travis for more info or to arrange a showing

(865) 293-8258

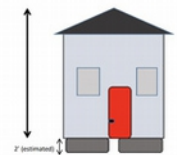


Plan View:



Dimensions:
 (1) Main footprint: 30'x12' (enclosed area 22'x10)
 (2) Deck: 20'x12'
 (3) Deck: 20'x12'

House Height: 9'



Rebuild Requirements:
 1. Written approval from TVA in advance before starting work
 2. Rebuilt to the exact configuration, total footprint, and dimensions (length, width and height)
 3. Approval of removal plans the existing floating cabin that will be removed